

Sentry
SUPPLY LLC
by **PRIME-LINE**®

Toilet Partition Hardware



Who we are



Originally established in 1975, we have been supplying Hardware for installing and maintaining toilet partitions, in public restrooms, for over 40 years.

Our ever expanding inventory makes it possible to offer repair parts for all makes of toilet partitions. We pride ourselves in responding quickly to all of our customers' needs, whether it be timely shipment of orders, quotation requests or sourcing and obtaining parts.

We are committed to Customer Satisfaction. Please give us the opportunity to prove it to you!

Customer Service

Prime-Line is ready to fulfill any large capacity order, we can take your order from inception to completion in stride. With customer service available from 6 A.M. to 5 P.M. PST every weekday, you'll get the answers you want, when you want them.

For further information, please contact us directly:

26950 San Bernardino Ave.,
 Redlands, CA 92374

800.255.3505
 primeline.net

Our value proposition

- Extensive product assortment
- Competitive wholesale pricing
- Largest selection of current and hard-to-find hardware
- In stock, ready to ship inventory
- Nationwide coverage
- Outstanding customer service
- Personalized account management
- State of the art ordering systems

What we offer

- E-business capability
- In-house creative services available
- Shipping nationwide or international
- Engineering capability with 3-D rendering
- 3-D printer model making capability
- QC department and cycle testing
- Multiple roll-forming capabilities
- Metal fabrication shop

How we can help

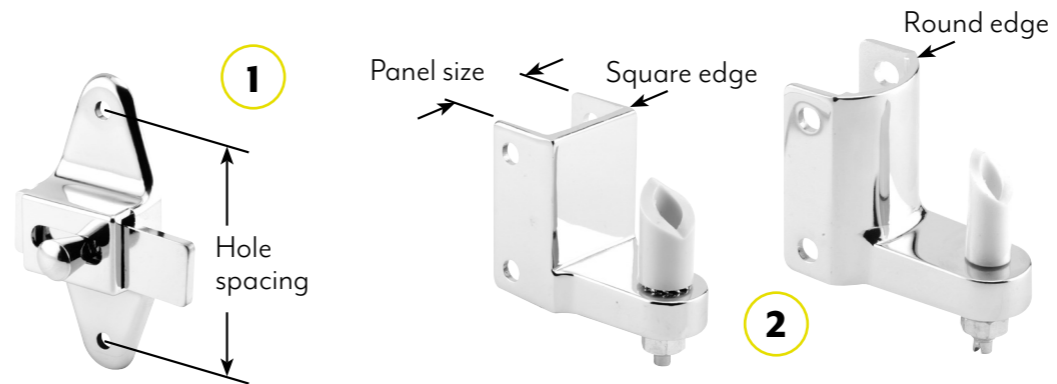
- Order fulfillment services include pick, pack and ship
- Order assembly and palletization
- EDI, ASN generation
- Prepacking & promotional packing
- Product storage & warehousing
- Inventory and labeling
- Cross-dock capabilities



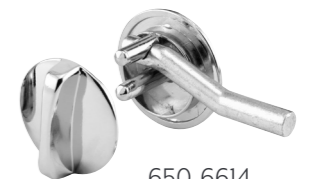


In order to identify your system:

1. Review the hole spacing (distance from the center of the first hole to the center of the second hole).
2. Select the correct panel size as well as the panel type (either square edge or round edge).
3. Review the handing guide below.



650-9600
Strike & Keeper



650-6614
Concealed Latch



650-7349
Door Insert

Section Table of Contents

[How To Use The Catalog](#)

[Cams](#)

[Coat Hooks](#)

[Concealed Latches](#)

[Door Stops](#)

[Fasteners & Tools](#)

[Headrail Accessories](#)

[Hinge Pins](#)

[Hinges](#)

[Pivot Hinges](#)

[Privacy cover](#)

[Pulls](#)

[Qwik Fix Kits](#)

[Strikes & Keepers](#)

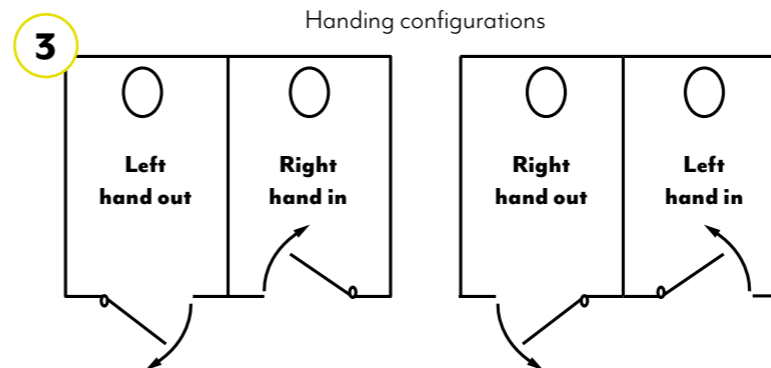
[Supports](#)

[Surface Latches](#)

[Wall Brackets](#)

[Wall Stops](#)

Guide for ordering surface mounted hinges:



650-6377
Wall Bracket



650-8241
Hinge

Clickable links for Prime-Line social media.

SENTRY SUPPLY

Toilet Partition Hardware



Originally established in 1975, we have been supplying hardware for installing and maintaining toilet partitions, in public restrooms, for over 40 years.

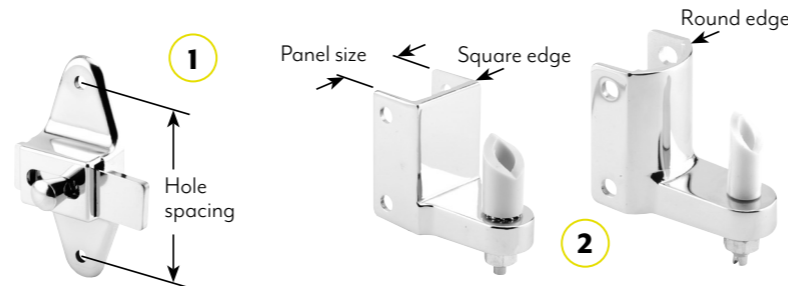
Section Table of Contents

How To Use The Catalog	Pivot Hinges
Cams	Privacy cover
Coat Hooks	Pulls
Concealed Latches	Qwik Fix Kits
Door Stops	Strikes & Keepers
Fasteners & Tools	Supports
Headrail Accessories	Surface Latches
Hinge Pins	Wall Brackets
Hinges	Wall Stops



In order to identify your system:

1. Review the hole spacing (distance from the center of the first hole to the center of the second hole).
2. Select the correct panel size as well as the panel type (either square edge or round edge).
3. Review the handing guide below.



656-6530
Strike & Keeper

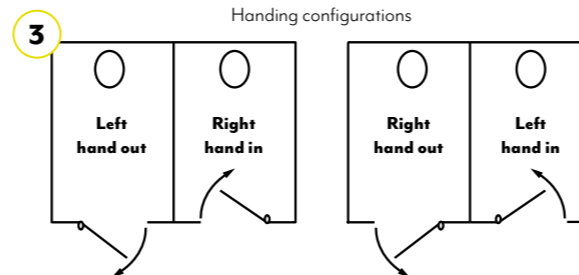


658-6614
Concealed Latch



656-2472
Door Insert

Guide for ordering surface mounted hinges:



656-6377
Wall Bracket



658-8241
Hinge

Clickable links for Prime-Line social media.

Clickable hyperlinks allow for fast navigation through catalog pages.

Clickable button jumps the currently viewed page back to the intro page where the Section Table of Contents is listed.



Privacy Cover

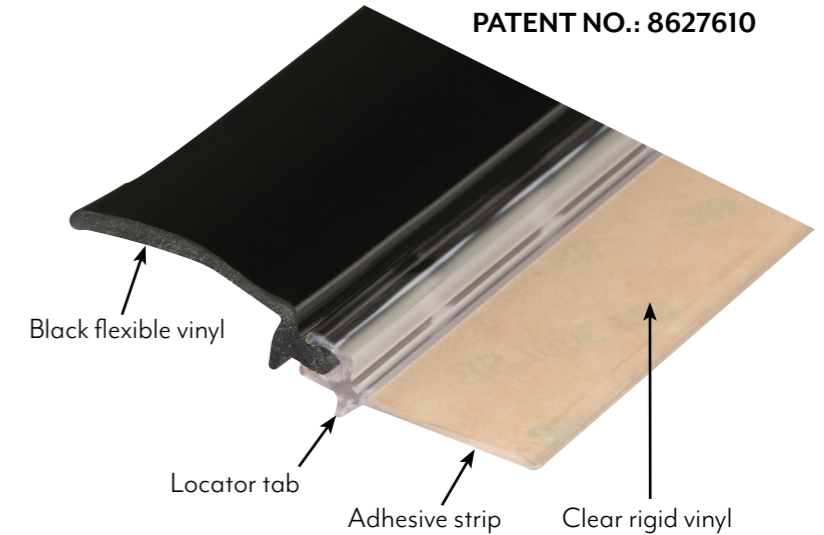
Qty: 1 set of (2) 58 in. pieces / **5 sets per box.**
650-1010

Features:

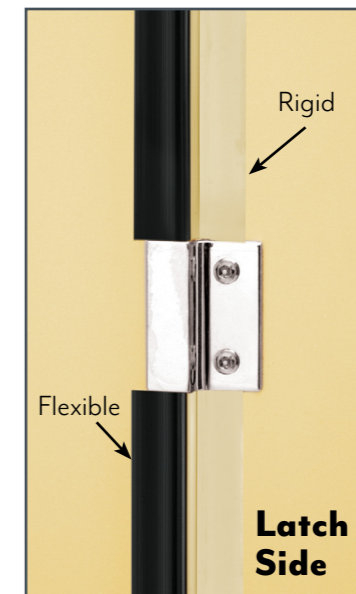
- Eliminates most door and panel gaps.
- Assures personal privacy.
- Self-adhesive for fastener free installation.
- Clear rigid vinyl blends to all partition colors and materials.
- Cut to fit for various partition door installations.
- Flexible vinyl flap adapts to multiple applications. The black color obscures vision.

Ideal For:

Schools, dormitories, offices, sports complexes, restaurants, hospitals, churches and more!



*Clear rigid vinyl attaches to stall with 3M adhesive tape.
 Black colored flexible flap obscures gap view.*



“These covers were installed in the ladies room at a local theater. Complaints about gaps have led us to the Sentry site. These strips installed easily and quickly. They can also be cut to length with the proper tools. Highly recommended.”

– A satisfied customer, North Florida ★★★★★ **5/5**



Qty: 1, with fasteners.
 3-1/2 in. hole spacing.
656-6602 (Chrome plated zamak)
656-8297 (Satin cast stainless steel)



Qty: 1, with fasteners.
 3-1/2 in. hole spacing, for Santanna and others.
656-4051 (Clear anodized aluminum)



Qty: 1, with fasteners.
 3-1/2 in. hole spacing, for Santanna and others.
656-8543 (Clear anodized aluminum)



Qty: 1, with fasteners.
 Offset bar, 3-1/2 in. hole spacing.
656-8618 (Chrome plated zamak)
656-9486 (Satin cast stainless steel)



Qty: 1, with fasteners.
 Offset bar, 2-3/4 in. hole spacing.
656-7431 (Chrome plated zamak)



Qty: 1, with fasteners.
 2-3/4 in. hole spacing.
656-6596 (Chrome plated zamak)
656-7455 (Satin cast stainless steel)



Qty: 1, with fasteners.
 2-5/8 in. hole spacing.
656-7184 (Chrome plated zamak)



Qty: 1, with fasteners.
 1-7/8 in. hole spacing, use with stamped stainless steel strikes and keepers, for Ampco, Santanna and others.
656-7996 (Satin stamped stainless steel)



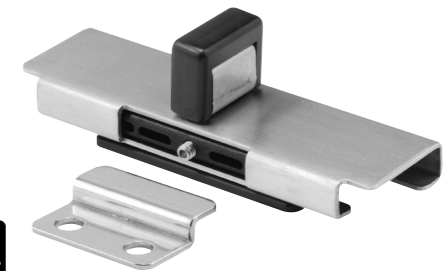
Qty: 1
 1-7/8 in. hole spacing.
656-9249 (Satin stamped stainless steel)



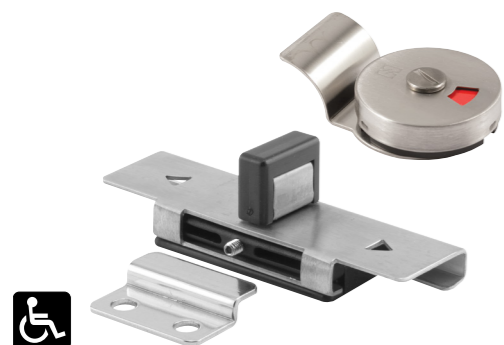
Qty: 1
 7/8 in. hole spacing.
656-6252 (Satin cast stainless steel)



Qty: 1 set, with fasteners.
 For inswinging doors, keeper has 7/8 in. hole spacing.
658-9873 (Satin stamped stainless steel)



Qty: 1 set, with fasteners.
 "Bobrick" style latch, for inswing doors, keeper has 7/8 in. hole spacing.
658-9875 (Satin stamped stainless steel)



Qty: 1 set, with fasteners.
 Indicator and pull, for inswinging doors, keeper has 7/8 in. hole spacing.

658-9874 (Satin stamped stainless steel)



Qty: 1 set.
 2-11/32 in. long straight bolt, for 1 in. thick laminated doors.

658-7528 (Chrome plated zamak)



Qty: 1 set.
 2-11/16 in. long bolt straight bolt, for 1 in. thick laminated doors.

658-8999 (Chrome plated zamak)



Qty: 1 set.
 2-11/16 in. long offset bolt, for 1 in. thick steel doors.

658-9000 (Chrome plated zamak)



Qty: 1 set.
 2-21/32 in. long flat tip bolt, for 1 in. thick steel doors.

658-7112 (Chrome plated zamak)



Qty: 1 set.
 2-21/32 in. long flat tip bolt, for 1 in. thick steel doors.

658-8996 (Chrome plated zamak)



Qty: 1 set.
 2-11/16 in. long offset bolt, for 1 in. thick steel doors.

658-6614 (Chrome plated zamak)



Qty: 1 set.
 3-5/32 in. long offset bolt, for steel doors, for Sanymetal.

658-2748 (Chrome plated zamak)



Qty: 1 set.
 Used by General and Knickerbocker.

658-9093 (Chrome plated zamak)



Qty: 1 set, with fasteners.
 For steel doors, for Global.

658-8918 (Chrome plated zamak)



Qty: 1 set.
 Used by General and Knickerbocker.

658-7630 (Chrome plated zamak)



Qty: 1 set, with fasteners.
 For steel doors, for Global.

658-2702 (Chrome plated zamak)

Concealed Latches



Qty: 1 set.
Use with latch housing 658-6617, used by Flush Metal.
658-6908 (Chrome plated zamak)



Qty: 1 set.
Use with latch housing 658-6617, used by Flush Metal.
658-8759 (Chrome plated zamak)



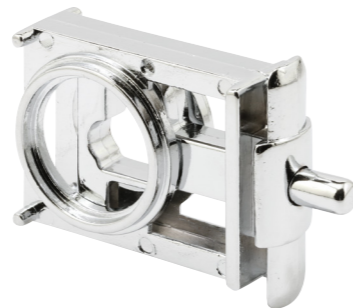
Qty: 1 set.
For 1 in. thick steel doors, for Sanymetal.
658-9117 (Chrome plated zamak)



Qty: 1, with fasteners.
For steel doors, used by Mills.
658-6797 (Chrome plated zamak)

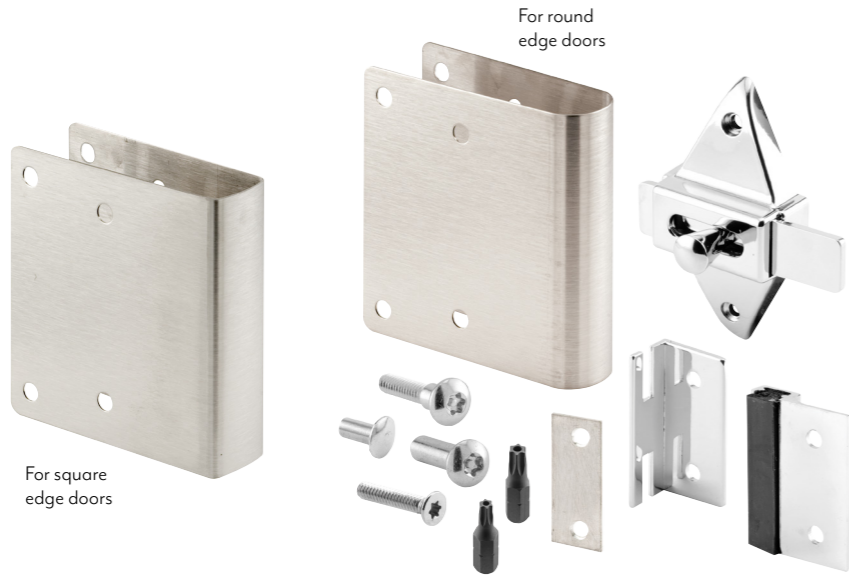


Qty: 1
For 1 in. thick steel doors, with outside "in use" indicator, used by Metpar.
658-6863 (Chrome plated zamak)



Qty: 1
Used by General Partitions.
656-6618 (Unplated zamak)
658-6618-1 (Chrome plated zamak)

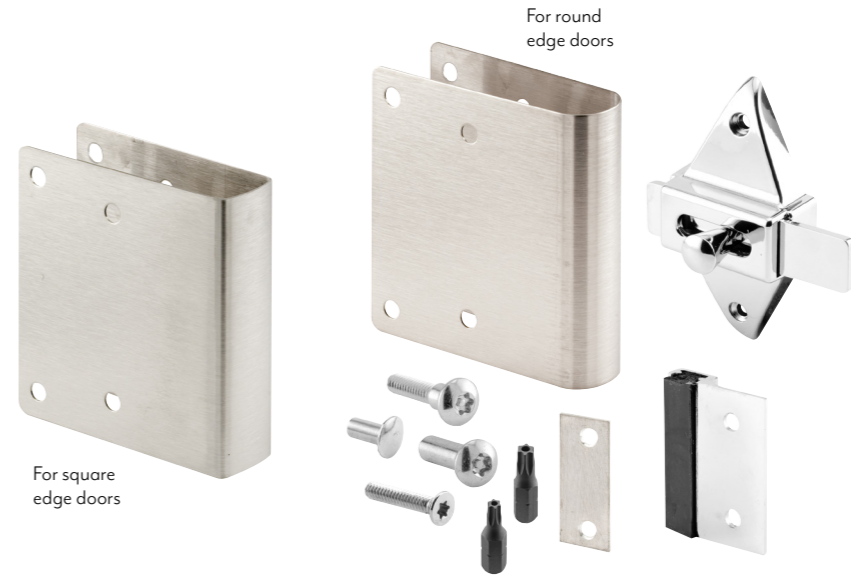
“Qwik-Fix” Kits



Qty: 1 set, with fasteners.

Kit for 1 in. inswing doors, replaces missing or broken concealed latches with a surface mount slide latch, stainless steel wrap-around cover plate, hides unsightly holes in doors, increases strength and durability.

656-1000 (For round edge doors) **656-1003** (For square edge doors)



Qty: 1 set, with fasteners.

Kit for 1 in. outswing doors, replaces missing or broken concealed latches with a surface mount slide latch, stainless steel wrap-around cover plate, hides unsightly holes in doors, increases strength and durability.

656-1001 (For round edge doors) **656-1004** (For square edge doors)



Qty: 1 set, with fasteners.

Kit for 1 in. outswing doors, replaces missing or broken concealed latches with a surface mount slide latch, stainless steel wrap-around cover plate, hides unsightly holes in doors, increases strength and durability.

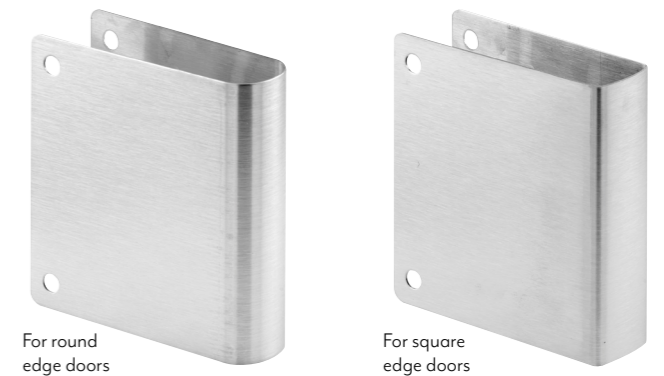
656-1002 (For round edge doors)



Qty: 1 set, with fasteners.

Cover/mounting plate, hides damaged holes, bumper/hook, offers increased strength and durability.

656-1006 (Satin stainless steel)



Qty: 1

For 1 in. thick doors, stainless steel wrap-around cover plate, hides unsightly holes in doors, increases strength and durability.

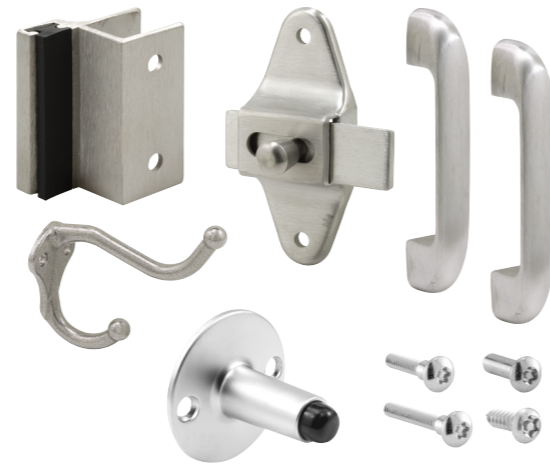
658-4038-1 (For round edge doors) **658-4039-1** (For square edge doors)

Door Hardware Kits



Qty: 1 set, with fasteners.
 Repair kit for inswinging partitions, for 1-1/4 in. square edge thick doors.

656-6950 (Chrome plated zamak)



Qty: 1 set, with fasteners.
 Repair kit for outswinging partitions, for 3/4 in. square edge thick doors.

656-3088 (Satin stainless steel)



Qty: 1 set, with fasteners.
 Repair kit for General inswinging laminate partitions.

656-2727 (Chrome plated zamak)



Qty: 1 set, with fasteners.
 Repair kit for General inswinging laminate partitions, for 1 in. square edge thick doors.

656-3079 (Chrome plated zamak)



Qty: 1 set, with fasteners.
 Repair kit for General & Rockville inswinging metal partitions, for 1-1/4 in. round edge thick doors.

658-3026 (Chrome plated zamak)

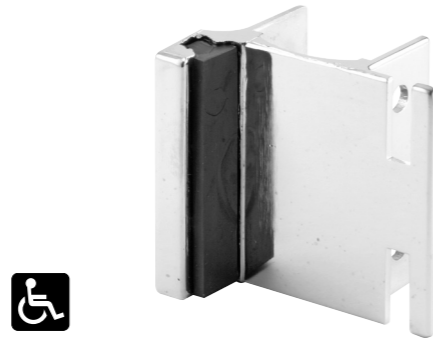


Qty: 1 set, with fasteners.
 Repair kit for General & Rockville outswinging metal partitions, for 1-1/4 in. round edge thick doors.

658-3027 (Chrome plated zamak)



Qty: 1, with fasteners.
 Inswing for slide latch, for 1-1/4 in. thick round edge posts, 1-1/2 in. hole spacing.
656-6515 (Chrome plated zamak)



Qty: 1, with fasteners.
 Inswing for throw latch (emergency entrance), for 1-1/4 in. thick round edge posts, 1-1/2 in. hole spacing.
656-6521 (Chrome plated zamak)



Qty: 1, with fasteners.
 Inswing for slide latch, for square edge posts, for 1-1/4 in. thick square edge posts. 1-1/2 in. hole spacing.
656-6482 (Chrome plated zamak)



Qty: 1
 Inswing for throw latch (emergency entrance), for square edge posts, 1-1/2 in. hole spacing.
656-2871 (Chrome plated zamak – for 1 in. thick posts, **with fasteners**)
656-6491 (Chrome plated zamak – for 1-1/4 in. thick posts, **with fasteners**)
658-8634 (Satin cast stainless steel – for 3/4 in. thick posts, **no fasteners**)
658-8635 (Satin cast stainless steel – for 1 in. thick posts, **no fasteners**)
658-8636 (Satin cast stainless steel – for 1-1/4 in. thick posts, **no fasteners**)



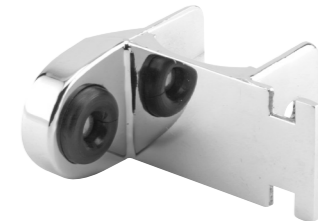
Qty: 1, with fasteners.
 Outswing for slide latch, for square edge posts, 1-1/2 in. hole spacing.
656-9375 (Chrome plated zamak – for 1 in. thick posts)
656-6488 (Chrome plated zamak – for 1-1/4 in. thick posts)
658-9910 (Satin cast stainless steel – for 3/4 in. thick posts, **no fasteners**)
656-9909 (Satin cast stainless steel – for 1 in. thick posts)



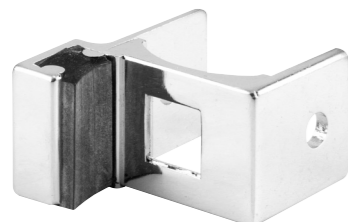
Qty: 1, with fasteners.
 In/outswing for concealed latch with round bolt, for 1-1/4 in. thick round edge posts.
656-6530 (Chrome plated zamak)



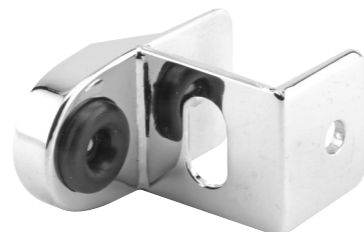
Qty: 1, with fasteners.
 In/outswing for concealed latch with flat bolt, for 1-1/4 in. thick round edge posts.
656-6533 (Chrome plated zamak)



Qty: 1, with fasteners.
 Inswing for throw latch (emergency entrance), for 1-1/4 in. thick round edge posts.
656-9942 (Chrome plated zamak)



Qty: 1, with fasteners.
 In/outswing for concealed latch with round bolt, for 1-1/4 in. thick round edge posts, for Knickerbocker.
656-7295 (Chrome plated zamak)



Qty: 1, with fasteners.
 In/outswing strike and keeper for concealed latch with round bolt, for 1-1/4 in. thick square edge posts.
656-7633 (Chrome plated zamak)

Strikes & Keepers



Qty: 1, with fasteners.
In/outswing for slide latch, 1-1/2 in. hole spacing.
656-6542 (Chrome plated zamak)



Qty: 1, with fasteners.
Inswing for slide latch, 1-1/2 in. hole spacing.
656-6536 (Chrome plated zamak)



Qty: 1, with fasteners.
Inswing for throw latch (emergency entrance), 1-1/2 in. hole spacing.
656-6539 (Chrome plated zamak)



Qty: 1 set.
Inswing for throw latch (emergency entrance), 1-1/2 in. hole spacing.
658-2864 (Chrome plated zamak)



Qty: 1 set.
Inswing for throw latch, 1-1/2 in. hole spacing.
650-2759 (Chrome plated zamak)



Qty: 1, with fasteners.
Outswing, 1-7/8 in. hole spacing, for 1 in. thick doors.
656-9837 (Satin stamped stainless steel)



Qty: 1, with fasteners.
Outswing, 1-7/8 in. hole spacing.
656-9978 (Satin stamped stainless steel – for 3/4 in. doors)
656-9984 (Satin stamped stainless steel – for 1 in. doors)



Qty: 1, with fasteners.
1-1/2 in. hole spacing, for Bobrick #1040.
656-4011 (Satin stamped stainless steel)



Qty: 1, with fasteners.
1-1/2 in. hole spacing, for Bobrick #1040.
656-4008 (Satin stamped stainless steel)



Qty: 1
Outswing for slide latch, for 1 in. thick square edge posts, 2-1/2 in. hole spacing.
658-2875 (Clear anodized extruded aluminum)



Qty: 1
Inswing for slide latch, for 1 in. thick square edge posts, 2-1/2 in. hole spacing.
658-2873 (Clear anodized extruded aluminum, **no fasteners**)
656-4046 (Brite dip extruded aluminum, **with fasteners**)

Coat Hooks, Bumpers & Door Stops



Qty: 1
 Rubber, 1/2 in. O.D.
658-6866 (Black)



Qty: 1, with fasteners.
 Rubber bumper, 3-1/2 in. projection.
656-6632 (Chrome plated zamak)



Qty: 1, with fasteners.
 Rubber bumper, 7/8 in. hole spacing, 3 in. projection.
656-6626 (Chrome plated zamak)
656-6626-T (Chrome plated zamak, **with T-27 fasteners**)
656-4057 (Satin cast stainless steel – with 1/4 in. I.D. holes)
656-7452 (Satin cast stainless steel)



Qty: 1, with fasteners.
 Rubber bumper, 1-1/8 in. hole spacing, 3 in. projection.
656-7214 (Chrome plated zamak)
656-7214-T (Chrome plated zamak, **with T-27 fasteners**)



Qty: 1
 3 in. projection.
656-6635 (Chrome plated zamak, **with fasteners**)
658-6635-1 (Satin cast stainless steel, **no fasteners**)



Qty: 1, with fasteners.
 3 in. projection.
656-9537 (Satin cast stainless steel)



Qty: 1, with fasteners.
 7/8 in. hole spacing, 1-9/16 in. projection.
656-2770 (Chrome plated zamak)



Qty: 1
 1/2 in. hole spacing, 1-7/16 in. projection.
658-3124 (Zinc plated steel)



Qty: 1, with fasteners.
 Cast zamak, 5-1/8 in. hole spacing, 2-1/8 in. projection.
658-1015 (Aluminum painted)



Qty: 1, with fastener.
 Replacement rubber tip for door stops.
658-1051 (Black)



Qty: 1, with fasteners.
 Cast zamak, rubber tip, 1-3/16 in. hole spacing, 4 in. drop down.
658-1002 (Bronze finish) **658-1003** (Chrome finish)



Qty: 1, with fasteners.
 Heavy duty cast zamak, rubber tip, 4 in. drop down.
658-1007 (Bronze finish) **658-1008** (Chrome finish)



Qty: 1, with fasteners.
 Cast iron, rubber tip, 4 in. drop down.
658-1013 (Aluminum finish)



Qty: 1, with fasteners.
 Cast brass, 3-3/8 in. height, 2-1/8 in. O.D. base.
658-1035 (Brushed chrome)



Qty: 1 set, with fasteners.
 Cast brass, 2 in. height.
658-1032 (Brushed chrome)



Qty: 1, with fasteners.
 Cast brass, 15/16 in. hole spacing, 1 in. height,
 1-3/4 in. O.D. base.
658-1025 (Brushed chrome) **658-1024** (Classic bronze)



Qty: 1, with fasteners.
 Cast brass, 1 in. hole spacing, 1-5/16 in. height,
 1-11/16 in. O.D. base.
658-1030 (Brushed chrome) **658-1027** (Satin nickel)



Qty: 1, with fasteners.
 Steel, 1-1/8 in. hole spacing, 2-11/16 in. height.
658-1022 (Brushed aluminum)



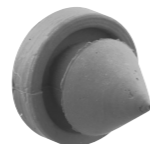
Qty: 1, with fasteners.
 Door stop, 1-19/32 in. hole spacing, 2 in. projection.
656-6638 (Chrome plated zamak)
656-6638-T (Chrome plated zamak, **with T-27 fasteners**)
656-9492 (Satin cast stainless steel)



Qty: 1, with fastener.
 2-1/2 in. O.D. base, 1 in. projection.
658-1043 (Brushed stainless steel)



Qty: 1, with fastener.
 2-1/2 in. O.D. base, 1 in. projection.
658-1046 (Brushed stainless steel)



Qty: 100
 Rubber, 1/2 in. O.D., 9/16 in. projection.
658-1055 (Gray)

Door Pulls



Qty: 1, with fasteners.
3/4 in. O.D., 6 in. hole spacing.
659-1049 (Satin aluminum)




Qty: 1, with fasteners.
5 in. hole spacing.
656-8229 (Stamped stainless steel)



Qty: 1, with fasteners.
4 in. hole spacing.
656-9870 (Chrome plated zamak)




Qty: 1, with fasteners.
3-1/2 in. hole spacing.
656-6641 (Chrome plated zamak)
656-9405 (Satin cast stainless steel)

Qty: 1 set, with fasteners.
3-1/2 in. hole spacing.
658-2701 (Chrome plated zamak)



Qty: 1, with fasteners.
2-3/4 in. hole spacing.
656-6644 (Chrome plated zamak)

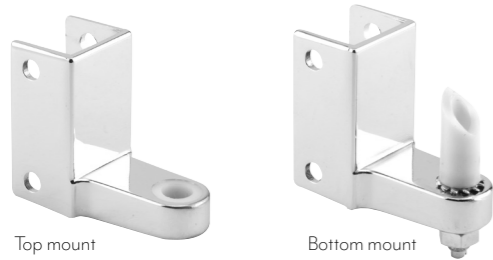



Qty: 1, with fasteners.
High-rise, 3-3/8 in. projection.
656-9867 (Satin cast stainless steel)

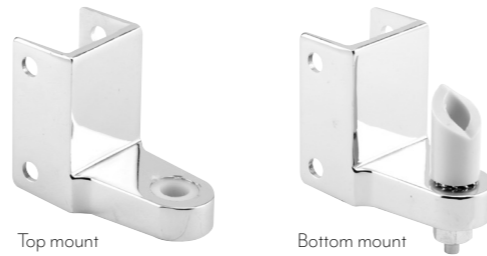


Qty: 1, with fasteners.
Foot operated, eliminates the need to make contact with a door when pulling it open, helping minimize exposure to germs.
650-2703 (Brushed stainless steel)

Pivot Hinges & Door Inserts



Qty: 1, with fasteners.
For 1 in. thick square edge posts, 1-9/32 in. pivot offset, 1-1/2 in. hole spacing, used by General Application (G-4).
656-8840 (Chrome plated zamak – top mount)
656-8843 (Chrome plated zamak – bottom mount)
656-8843-T (Chrome plated zamak – bottom mount, **with T-27 fasteners**)
656-9594 (Satin stainless steel – bottom mount)



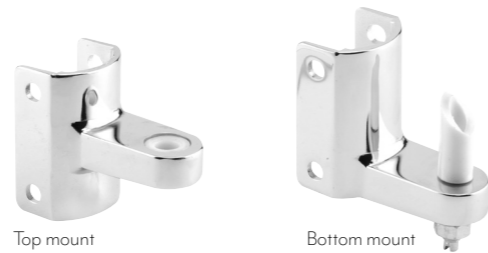
Qty: 1, with fasteners.
For 1-1/4 in. thick square edge posts, 1-9/32 in. pivot offset, 1-1/2 in. hole spacing, used by General & American Sanitary.
656-6551 (Chrome plated zamak – top mount)
656-6557 (Chrome plated zamak – bottom mount)
656-6557-T (Chrome plated zamak – bottom mount, **with T-27 fasteners**)



Qty: 1, with fasteners.
For 1-1/4 in. thick round edge posts, top hinge has 1-3/32 in. pivot offset, bottom hinge has 1-5/32 in. pivot offset, 1-1/2 in. hole spacing, used by Flush Metal.
656-6545 (Chrome plated zamak – top mount)
656-6548 (Chrome plated zamak – bottom mount)
656-6548-T (Chrome plated zamak – bottom mount, **with T-27 fasteners**)



Qty: 1, with fasteners.
For 1-1/4 in. thick round edge posts, 1-3/32 in. pivot offset, 1-1/2 in. hole spacing, used by Metpar.
656-7217 (Chrome plated zamak – top mount)
656-7220 (Chrome plated zamak – bottom mount)



Qty: 1
For 1-1/4 in. thick round edge posts, top hinge has 1-3/32 in. pivot offset, bottom hinge has 1-5/32 in. pivot offset, 1-1/2 in. hole spacing, used by All-American.
650-7040 (Chrome plated zamak – top mount, **no fasteners**)
656-7040 (Chrome plated zamak – top mount, **with fasteners**)
650-7283 (Chrome plated zamak – bottom mount, **no fasteners**)
656-7283 (Chrome plated zamak – bottom mount, **with fasteners**)



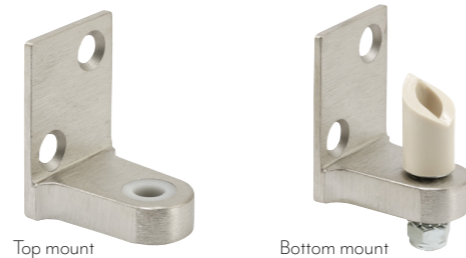
Qty: 1, with fasteners.
For 1-1/4 in. thick round edge posts, 1-13/32 in. pivot offset, 1-1/8 in. hole spacing, used by General & Knickerbocker.
656-7265 (Chrome plated zamak – top mount)



Qty: 1, with fasteners.
For 1-1/4 in. thick round edge posts, 1-1/16 in. pivot offset, 1-1/4 in. hole spacing, used by Sanymetal.
658-7169 (Chrome plated zamak – top mount)



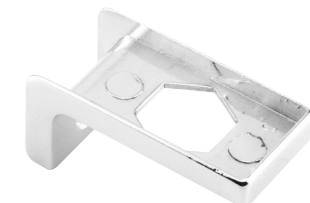
Qty: 1 set, with fasteners.
For 1-1/4 in. thick square edge posts, 1-1/4 in. pivot offset, 1-3/8 in. hole spacing, for Mills.
658-2905 (Chrome plated zamak)



Qty: 1, with fasteners.
Wall mounted, 1-9/32 in. pivot offset, used by General Applications (G-3).
656-1047 (Satin cast stainless steel – top mount)
656-1101 (Satin cast stainless steel – bottom mount)



Qty: 1, with fastener.
Open ended, for 1 in. thick square edge doors, bottom insert has 3/4 in. hex and is for large cams.
656-2472 (Chrome plated zamak – bottom mount)



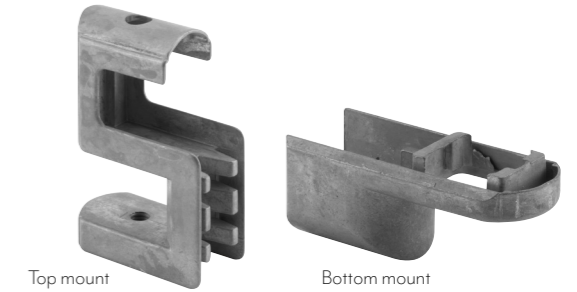
Qty: 1, with fastener.
Close ended, for 1 in. thick square edge doors, bottom insert has 3/4 in. hex, used by Ampco & General.
656-6593 (Chrome plated zamak – bottom mount)



Qty: 1, with fastener.
 Open ended, for 1 in. thick square edge doors, bottom insert has 29/32 in. square, used by Fiat.
656-2484 (Chrome plated zamak – bottom mount)



Qty: 1, with fasteners.
 For 1 in. thick round edge doors, used by Flush Metal.
656-9465 (Chrome plated zamak – bottom mount)
656-8972 (Unplated zamak – top mount)
656-7822 (Unplated zamak – bottom mount)



Qty: 1, with fasteners.
 For 1 in. thick round edge doors, used by Ampco & Metpar.
656-7235 (Chrome plated zamak – bottom mount)
656-7669 (Unplated zamak – top mount)
656-7328 (Unplated zamak – bottom mount)



Qty: 1
 For 1 in. thick round edge doors, used by General.
658-7625-1 (Chrome plated zamak – top mount)
658-7619-1 (Chrome plated zamak – bottom mount)
658-7625 (Unplated zamak – top mount)
658-7619 (Unplated zamak – bottom mount)



Qty: 1
 Plastic, square, unshaved, 7/8 in. O.D., 11/16 in. I.D.
658-7232



Qty: 1
 Plastic, round, for 5/8 in. pintle, 3/4 in. O.D.
658-6923



Qty: 1 set.
 For “M” hinges, plastic, round, 3/4 in. O.D.
658-7534

Pintles, Candle Cams & Hinge Pins



Qty: 1, with fastener.
 Plastic and steel, 5/8 in. O.D, 5/16-18 thread.
658-6986



Qty: 1, with fastener.
 Plastic and steel, 1/2 in. O.D, 5/16-18 thread.
650-7145



Qty: 1, with fastener.
 Plastic and steel, 5/8 in. O.D., 10-32-1/2 thread, for Knickerbocker.
658-7106



Qty: 1 set.
 Plastic and steel pintle, 1/2 in. O.D, 5/16-18 thread, plastic pivot hinge, keylock for 1/2 in. pintle.
656-3157



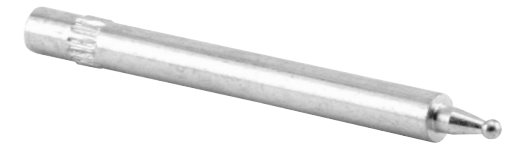
Qty: 1, with fasteners.
 Plastic, 7/8 in. O.D., for Metpar.
658-7672



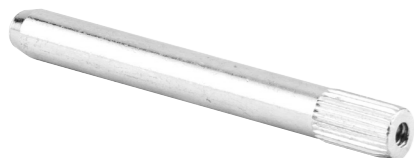
Qty: 1
 For steel doors, plastic, 1 in. O.D., for Knickerbocker.
658-7205



Qty: 1
 Threaded steel, 5/16-18 thread, 3/8 in. O.D., used by Ampco & Metpar.
658-6875



Qty: 1
 Knurled steel, 1/4 in. O.D., used by General.
658-7663



Qty: 1
 Knurled steel, 10-24 thread, 3/8 in. O.D.
658-7055



Qty: 1
 Steel, 3/8 in. O.D., used by Shanahan.
658-7226



Qty: 1
 Knurled plastic, 1/4-20 thread, 3/8 in. O.D., used by Sanymetal.
658-6911

Hinges



Top hinge



Bottom hinge

Qty: 1 set, with fasteners.
Top and bottom, surface mounted, 1-1/2 in. hole spacing.
658-9009 (Satin stamped stainless steel – R.H. in/L.H. out)



Top hinge



Bottom hinge

R.H. in/L.H. out shown

Qty: 1 set, with fasteners.
Heavy duty, top and bottom, surface mounted, 1-1/2 in. hole spacing.
658-8237 (Satin stamped stainless steel – R.H. in/L.H. out)
658-8240 (Satin stamped stainless steel – L.H. in/R.H. out)
658-8241 (Satin stamped stainless steel – non-handed, **no fasteners**)



Top hinge



Bottom hinge

R.H. in/L.H. out shown

Qty: 1 set, with fasteners.
Square barrel, top and bottom, surface mounted, 1-1/2 in. hole spacing.
658-2019 (Satin cast stainless steel – R.H. in/L.H. out)
658-2022 (Satin cast stainless steel – L.H. in/R.H. out)



Top hinge



Bottom hinge

R.H. in/L.H. out shown

Qty: 1 set, with fasteners.
Heavy duty, top and bottom, surface mounted, 1-1/2 in. hole spacing.
658-2870 (Satin stamped stainless steel – R.H. in/L.H. out)
658-2869 (Satin stamped stainless steel – L.H. in/R.H. out)



Top hinge



Bottom hinge

R.H. in/L.H. out shown

Qty: 1 set, with fasteners.
Top and bottom, surface mounted, 1-1/2 in. hole spacing.
658-8621 (Satin cast stainless steel – R.H. in/L.H. out)
658-8056 (Satin cast stainless steel – L.H. in/R.H. out)



Top hinge



Bottom hinge

R.H. in/L.H. out shown

Qty: 1 set, with fasteners.
Top and bottom, surface mounted, 1-1/2 in. hole spacing.
658-6575 (Chrome plated brass – R.H. in/L.H. out)
658-6572 (Chrome plated brass – L.H. in/R.H. out)



Top hinge

Bottom hinge

R.H. in/L.H. out shown

Qty: 1 set.
Top and bottom, surface mounted, all metal inserts, 1-1/2 in. hole spacing, satin cast stainless steel.

	Handing	Hinges	Fasteners
656-8624	R.H. in/L.H. out	Top & bottom	Yes
650-8626	R.H. in/L.H. out	2 Top & 1 bottom	No
656-8625	L.H. in/R.H. out	Top & bottom	Yes
650-8627	L.H. in/R.H. out	2 Top & 1 bottom	No



Qty: 1 set.
Top and bottom, round barrel, for 1 in. thick panels, clear anodized aluminum.

	Handing	Hinges	Fasteners
656-2843	R.H. in/L.H. out	Top & bottom	Yes
658-2859	R.H. in/L.H. out	Top only	No
656-2844	L.H. in/R.H. out	Top & bottom	Yes
658-2858	L.H. in/R.H. out	Top only	No



Qty: 1 set, with fasteners.
Top and bottom, roller bearing design, for phenolic and solid plastic applications, for 3/4 in. thick panels with inserts, for 1 in. thick panels without inserts, 1-1/2 in. hole spacing.

656-6040-T (Satin stamped stainless steel)



Qty: 1 set.
Cam and pintle, for top round barrel hinges, for Comtec/Santana.

658-2872



Qty: 1 set.
Cam and pintle, for bottom round barrel hinges, for Comtec/Santana.

658-2874



Qty: 1 set.
Set includes caps, pin, pintle, cam and retaining ring, for round barrel hinge.

658-7037



Qty: 1
Continuous (piano) hinge, 16 gauge, 1/8 in. pin with spring, satin stamped stainless steel.

	Handing	Length	Hole Count	Hole Spacing	Fasteners
658-4049	L.H. in/R.H. out	54 in.	6	10-1/4 in.	No
656-9399	R.H. in/L.H. out	57-1/2 in.	6	11 in.	Yes
656-9258	L.H. in/R.H. out	57-1/2 in.	6	11 in.	Yes



Qty: 1
Cam-closing (piano) hinge, 14 gauge, 1/4 in. pin, satin stamped stainless steel.

	Handing	Length	Hole Count	Hole Spacing
658-9400R	Non-handed	57-1/2 in.	6	13 in.
658-9402R	Non-handed	54-1/2 in.	5	11 in.



Qty: 1, with fasteners.
Two ear, for 1-1/4 in. thick panels, 1-3/4 in. length.
656-6377 (Chrome plated zamak)
656-6377-T (Chrome plated zamak, **with T-27 fasteners**)



Qty: 1, with fasteners.
Two ear, for 1 in. thick panels, 3-1/2 in. length.
656-6365 (Chrome plated zamak)

Qty: 1
Two ear, chrome plated zamak.

Panel Size	Length	Width	Fasteners
3/4 in.	2-1/2 in.	3 in.	No
1 in.	2-1/2 in.	4 in.	Yes
1 in.	2-1/2 in.	4 in.	Yes (T-27)
1 in.	3-1/2 in.	4 in.	Yes



658-8372
656-4021
656-4021-T
656-6446

Qty: 1, with fasteners.
Two ear, 2-1/2 in. length.

	Finish	Panel Size	Width	
656-9033	Chrome plated zamak	1/2 in.	2-7/8 in.	
656-6350	Chrome plated zamak	3/4 in.	3 in.	
656-6353	Chrome plated zamak	7/8 in.	3-1/2 in.	
656-6356	Chrome plated zamak	1 in.	4 in.	
656-6356-T	Chrome plated zamak	1 in.	4 in.	(T-27 fasteners)
656-6368	Chrome plated zamak	1-1/4 in.	4 in.	
656-6368-T	Chrome plated zamak	1-1/4 in.	4 in.	(T-27 fasteners)



Qty: 1, with fasteners.
One ear, for 1-1/4 in. thick panels, 1-5/8 in. length.
656-6404 (Chrome plated zamak)

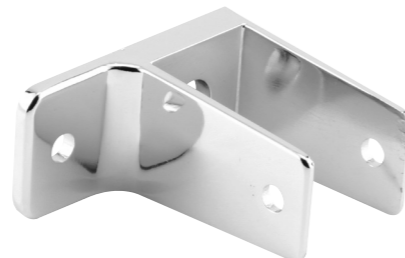


Qty: 1, with fasteners.
One ear, 3-1/2 in. length, chrome plated zamak.

	Panel Size	Width
656-6407	1 in.	2-3/4 in.
656-6410	1-1/4 in.	2-7/8 in.

Qty: 1
One ear, 2-1/2 in. length.

	Finish	Panel Size	Width	Fasteners
656-9499	Chrome plated zamak	1/2 in.	1-3/4 in.	Yes
656-9282	Chrome plated zamak	3/4 in.	2 in.	Yes
656-6383	Chrome plated zamak	1 in.	2-5/8 in.	Yes
656-6395	Chrome plated zamak	1-1/4 in.	2-3/4 in.	Yes
656-6395-T	Chrome plated zamak	1-1/4 in.	2-3/4 in.	Yes (T-27)
656-9387	Satin stainless steel	3/4 in.	2 in.	Yes
658-8786	Satin stainless steel	1-1/4 in.	2-3/4 in.	No



Qty: 1 set.
Two piece, fits any panel size, 2-1/2 in. length.
658-8786 (Chrome plated zamak)

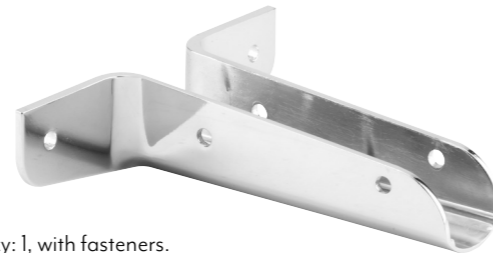


Qty: 1 set, with fasteners.
Two piece, fits any panel size, 1 in. hole spacing.
656-6437 (Chrome plated zamak – 2-1/2 in. length)
656-6437-T (Chrome plated zamak – 2-1/2 in. length, **with T-27 fasteners**)
656-6434 (Chrome plated zamak – 3-1/2 in. length)
656-6434-T (Chrome plated zamak – 3-1/2 in. length, **with T-27 fasteners**)

Wall Brackets



Qty: 1 set, with fasteners.
 Two piece, fits any panel size, 1-3/4 in. length.
656-8342 (Chrome plated zamak)



Qty: 1, with fasteners.
 Wing bracket, chrome plated zamak.

	Panel Size	Length	Width
656-6440	1 in.	12 in.	7 in.
656-6443	1-1/4 in.	6 in.	6-1/4 in.



Qty: 1, with fasteners.
 "U" bracket, 1-3/8 in. length.

	Finish	Panel Size	Width
656-6413	Chrome plated zamak	3/4 in.	1 in.
656-6416	Chrome plated zamak	7/8 in.	1-5/32 in.
656-6419	Chrome plated zamak	1 in.	1-1/4 in.
656-6422	Chrome plated zamak	1-1/4 in.	1-1/2 in.
656-9435	Satin stainless steel	1 in.	1-1/4 in.



Qty: 1, with fasteners.
 "U" bracket, for 1-1/4 in. thick panels, 2-1/2 in. length.
656-6428 (Chrome plated zamak)



Qty: 1 set, with fasteners.
 2 ear, for 1-1/4 in. panel size, 2-1/2 in. length.
656-2934 (Chrome plated zamak)

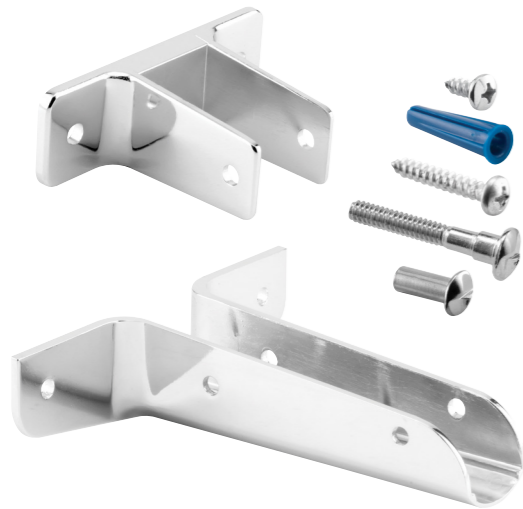


Qty: 1 set, with fasteners.
 2 ear, for 1 in. panel size, 3-1/2 in. length.
658-2901 (Chrome plated zamak)



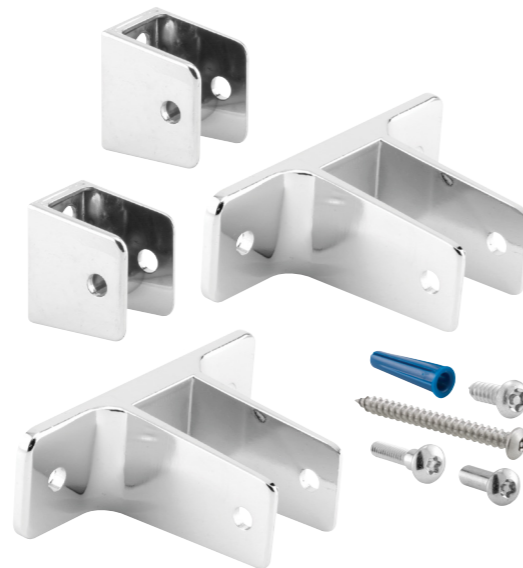
Qty: 1 set.
 One ear, 2-1/2 in. length.

	Finish	Panel Size	Width	Fasteners
656-2893	Chrome plated zamak	3/4 in.	2 in.	Yes (T-27)
658-2898	Chrome plated zamak	1-1/4 in.	2-3/4 in.	Yes (T-27)



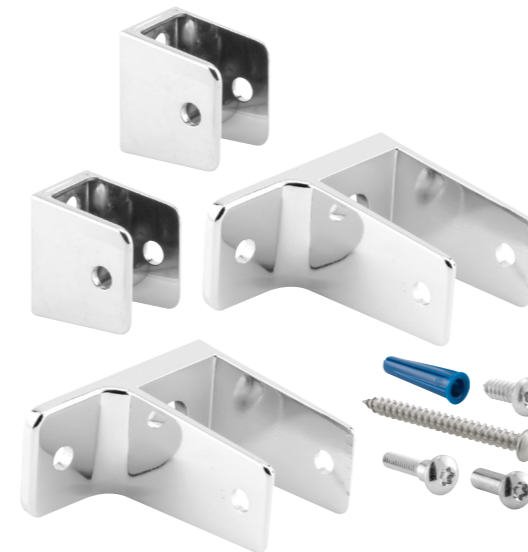
Qty: 1 set, with fasteners.
2 ear wall bracket, fits 1-1/4 in. panel size, 4 in. width,
2 ear wing bracket, fits 1-1/4 in. panel size, 6-1/4 in.
width.

656-6947 (Chrome plated zamak)



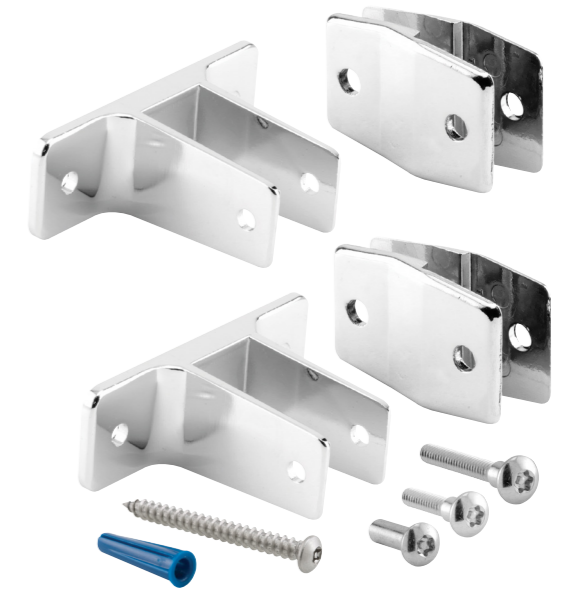
Qty: 1 set, with fasteners.
2 ear wall bracket, fits 1 in. panel size, 4 in. width,
"U" bracket, fits 1 in. panel size, 1-1/4 in. width.

658-2896 (Chrome plated zamak)



Qty: 1 set, with fasteners.
1 ear wall bracket, fits 1 in. panel size, 2-5/8 in. width,
"U" bracket, fits 1 in. panel size, 1-1/4 in. width.

658-2897 (Chrome plated zamak)



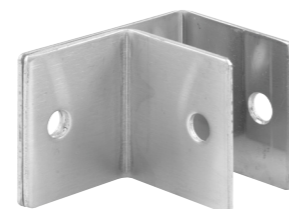
Qty: 1 set, with fasteners.
2 ear wall bracket, fits 1 in. panel size, 4 in. width,
alcove clip, 1/8 in. offset per clip, 1-1/2 in. hole spacing.

658-2900 (Chrome plated zamak)



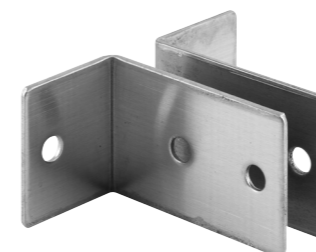
Qty: 1 set, with fasteners.
1 ear wall bracket, fits 1 in. panel size, 2-5/8 in. width,
alcove clip, 1/8 in. offset per clip, 1-1/2 in. hole spacing.

658-2899 (Chrome plated zamak)



Qty: 1
One ear, stamped stainless steel, 14 gauge.

	Panel Size	Length	Width
658-8148-1	1/2 in.	1-1/2 in.	1-7/8 in.
658-8180	1-1/4 in.	1-3/4 in.	2-11/16 in.



Qty: 1 set.
Two piece, 14 gauge, fits any panel size, 2-1/2 in. length.
658-1920 (Stamped stainless steel)



Qty: 1, with fasteners.
"U" bracket, stamped stainless steel,
14 gauge, 1-1/2 in. length.

	Panel Size	Width	
656-8193	1/2 in.	5/8 in.	
656-8196	3/4 in.	15/16 in.	
656-8202	1 in.	1-3/16 in.	
656-8202-T	1 in.	1-3/16 in.	(T-27 fasteners)
656-8205	1-1/4 in.	1-3/8 in.	

Wall Brackets



Qty: 1 set with fasteners.
 Two ear, stamped stainless steel.

656-3024

656-3030

Panel Size	Height	Width	Set Includes
3/4 in.	2-1/2 in.	3-3/8 in.	3 brackets
1 in.	3-1/2 in.	3-11/16 in.	2 brackets

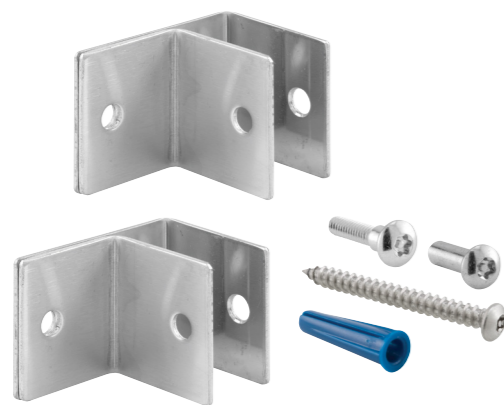


Qty: 1 set with fasteners.
 2 ear bracket, "U" bracket, stamped stainless steel.

656-2892-SS

656-3002

Panel Size	Height	Width	"U" Bracket Height	"U" Bracket Width
1/2 in.	2-1/2 in.	3-3/16 in.	1-1/2 in.	5/8 in.
1 in.	2-1/2 in.	3-11/16 in.	1-1/2 in.	1-3/16 in.



Qty: 1 set with fasteners.
 One ear, stamped stainless steel.

656-2893-SS

656-3012

Panel Size	Height	Width
3/4 in.	2-1/2 in.	2-1/8 in.
1 in.	2-1/2 in.	2-3/8 in.



Qty: 1 set with fasteners.
 1 ear bracket, "U" bracket, stamped stainless steel.

656-2891-SS

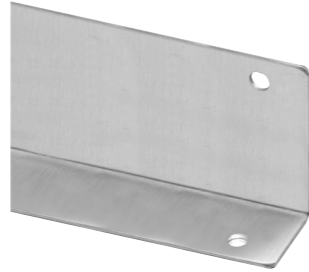
656-3001

Panel Size	Bracket Height	Bracket Width	"U" Bracket Height	"U" Bracket Width
1/2 in.	2-1/2 in.	2-7/8 in.	1-1/2 in.	5/8 in.
1 in.	2-1/2 in.	2-3/8 in.	1-1/2 in.	1-3/16 in.

Wall Brackets & Pilaster Shoes



Qty: 1
“L” angle, galvanized steel, 18 gauge, 1 in. width, 2-3/4 in. height, 9-13/16 in. hole centers.
658-2431



Qty: 1
“L” angle, stamped stainless steel, continuous roll formed, 18 gauge, 1-1/4 in. width, 2-1/2 in. height.

Panel Size	Length	Hole Count	Hole Spacing
Any	57 in.	5	14 in.

658-1519

Qty: 1
Two ear, stamped stainless steel, continuous roll formed, 18 gauge, 2-1/2 in. height.

Panel Size	Length	Width	Hole Count	Hole Spacing	
658-1503	1/2 in.	41 in.	3-1/8 in.	4	13 in.
658-1521	3/4 in.	41 in.	3-3/8 in.	4	13 in.
658-1520	1 in.	41 in.	3-5/8 in.	4	13 in.
658-1515	1 in.	54 in.	3-5/8 in.	5	13 in.
658-1500	1/2 in.	57 in.	3-1/8 in.	5	14 in.
658-1506	3/4 in.	57 in.	3-3/8 in.	5	14 in.
658-1522	1 in.	57 in.	3-5/8 in.	5	14 in.



Qty: 1
One ear, stamped stainless steel, continuous roll formed wall brackets, 18 gauge, 2-1/2 in. height, hole count of 5.

Panel Size	Length	Width	Hole Spacing	
658-1516	1 in.	54 in.	2-3/8 in.	13 in.
658-1501	1/2 in.	57 in.	1-7/8 in.	14 in.
658-1507	3/4 in.	57 in.	2-1/8 in.	14 in.
658-1523	1 in.	57 in.	2-3/8 in.	14 in.
658-1525	1-1/4 in.	57 in.	2-5/8 in.	14 in.



658-1517
658-1502
658-1508
658-1524

Qty: 1
“U” bracket, stamped stainless steel, continuous roll formed, 18 gauge, 1-1/2 in. height, hole count of 5.

Panel Size	Length	Width	Hole Spacing
1 in.	54 in.	2-3/8 in.	13 in.
1/2 in.	57 in.	1-7/8 in.	14 in.
1 in.	57 in.	2-3/8 in.	14 in.
1 in.	57 in.	3-5/8 in.	14 in.



Qty: 1
Oval, for 1-1/4 in. thick posts, 22 gauge, stainless steel.

No Fasteners	With Fasteners	Length
658-3009-3	659-3009-3	3 in.
658-3009-4	656-3009-4	4 in.
658-3009-5	659-3009-5	5 in.
658-3009-6	659-3009-6	6 in.
658-3009-7	659-3009-7	7 in.
658-3009-8	659-3009-8	8 in.
658-3009-9	659-3009-9	9 in.
658-3009-10	659-3009-10	10 in.
658-3009-12	659-3009-12	12 in.
658-3009-14	—	14 in.
658-3009-18	659-3009-18	18 in.
658-3009-22	659-3009-22	22 in.



Qty: 1
Open end, for 1-1/4 in. thick posts, 22 gauge, stainless steel.
658-3001-4



Qty: 1
For 1 in. thick posts, 22 gauge, stainless steel.
658-3004-4 (4 in. length) **658-3004-6** (6 in. length)
658-3004-5 (5 in. length) **650-2900-10** (10 in. length)



Qty: 1
Offset, for 3/4 in. thick posts, 22 gauge, stainless steel.
658-3005-3 (3 in. length) **658-3005-7** (7 in. length)
658-3005-4 (4 in. length) **658-3005-10** (10 in. length)
658-3005-5 (5 in. length) **658-3005-12** (12 in. length)
658-3005-6 (6 in. length)

Pilaster Shoes & Partition Supports



Qty: 1
 One ear, floor mounted, for 1/2 in. to 1-1/4 in. thick panels, stainless steel.
658-2004 (11-1/2 in. to 14 in. Floor clearance)



Qty: 1
 Two ear, floor mounted, for 1-1/4 in. thick panels, stainless steel.
650-9024-2 (7-1/2 in. to 10 in. Floor clearance)
658-9024 (11-1/2 in. to 14 in. Floor clearance)



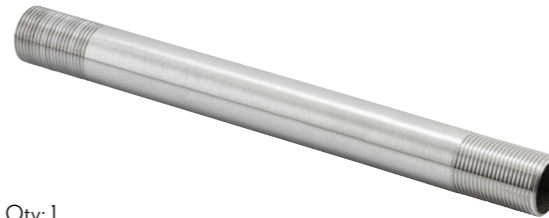
Qty: 1
 Base mount for pilaster supports, stainless steel.
658-2004-2 (Stainless steel)



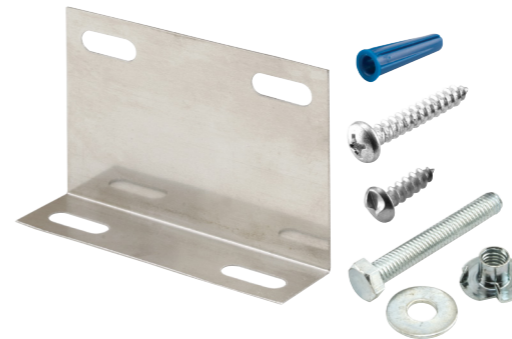
Qty: 1 set, with fasteners.
 Anchoring kit, for 3/4 in. thick and larger posts.
656-9408



Qty: 1, with fasteners.
 1-1/4 in. Square, 2-1/2 in. hole spacing.
656-9297 (Chrome plated zamak)



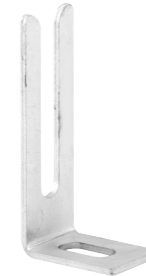
Qty: 1
 Support shaft for pilaster supports, stainless steel.
658-2004-4 (For 9-1/2 in. to 12 in. Floor clearance)
659-2004 (For 12 in. to 14 in. Floor clearance)



Qty: 1 set, with fasteners.
 Anchoring kit, for any post thickness, 3 in. to 5 in. long posts require one kit, 6 in. to 17 in. long posts require two kits, 18 in. and longer posts require 3 kits.
658-9219



Qty: 1, with fasteners.
 1-3/4 in. Square, 3 in. hole spacing.
656-6671 (Chrome plated zamak)



Qty: 1
 Anchoring fork.
656-2448



Qty: 1
 For 1 in. x 1-7/8 in. rectangle pilaster post.
658-6689 (Chrome plated zamak)



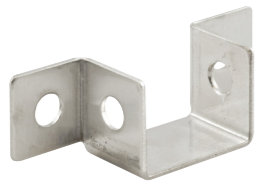
Qty: 1
 For 1-3/4 in. pilaster post.
658-7019



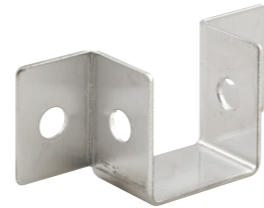
Qty: 1
 For "Anti-Grip" headrail.
658-6662 (Chrome plated zamak)



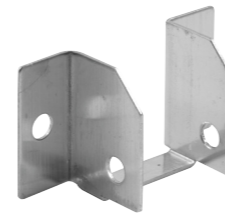
Qty: 1
 For headrail with curtain track, aluminum hook with plastic guide.
658-6647



Qty: 1
 For 1 in. thick headrails, 1-31/32 in. hole spacing.
658-6675 (Stamped stainless steel)



Qty: 1
 For 1 in. thick headrails, 1-15/16 in. hole spacing.
658-6676 (Stamped stainless steel)



Qty: 1
 For headrails with tracks, stamped stainless steel.

658-6672

Rail Size	Opening Width	Hole Spacing	Width
3/4 in.	1-1/32 in.	1-7/8 in.	2-1/2 in.



Qty: 1, with fasteners.
 Chrome plated zamak.

656-6473

656-6473-T

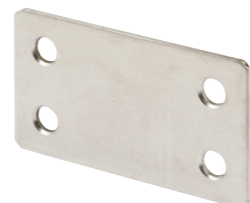
656-8513

Rail Size	Hole Spacing	Width
1 in.	2 in.	2-3/4 in.
1 in.	2 in.	2-3/4 in.
1-1/4 in.	2-3/8 in.	3-1/16 in.

(T-27 fasteners)



Qty: 1 set.
 Joins laminate panel to pilaster, 1/8 in. offset per clip, 1-1/2 in. hole spacing.
650-6656 (Chrome plated zamak, **no fasteners**)
656-6656 (Chrome plated zamak, **with fasteners**)
656-6656-T (Chrome plated zamak, **with T-27 fasteners**)
656-4028 (Satin cast stainless steel, **with fasteners**)
656-4028-T (Satin cast stainless steel, **with T-27 fasteners**)



Qty: 1
 Joins laminate panel to pilaster, flush clip, 1-7/8 in. hole spacing.
658-4034 (Stamped stainless steel)



Qty: 1
 Right angle curved molding, for 1 in. thick door and 1-1/4 in. thick post
658-6651 (Satin cast zamak – for Metpar, **no fasteners**)
656-6653 (Chrome plated zamak – for Flush Metal, **with fasteners**)



Qty: 1, with fasteners.
Single roll dispenser, standard or 1800 sheet.
658-6710 (Chrome plated zamak)



Qty: 1, with fasteners.
Double roll dispenser, standard or 1800 sheet.
658-6713 (Chrome plated zamak)



Qty: 100
Flat head "Phillips", #10 x 1 in.
651-0487 (Chrome plated steel)



Qty: 100
Pan head "Phillips".

Chrome Plated Steel	Stainless Steel	Size
658-0488	—	#12 x 1-1/2 in.
651-0361	642-0418	#14 x 5/8 in.
651-0490	—	#14 x 1-1/2 in.
658-0491	—	#14 x 1-3/4 in.



Qty: 100
T-20 flat head, six lobe with center pin, #10 x 1 in.
645-0140 (Chrome) **642-0140** (Stainless steel)



Qty: 100
T-20 oval head, six lobe with center pin.

Chrome Plated Steel	Stainless Steel	Size
645-0148	642-0148	#8-32 x 1-1/8 in.
645-0149	—	#8-32 x 1-3/8 in.

Chrome Plated Steel	Stainless Steel	Size
645-0119	642-0119	#10 x 5/8 in.
645-0128	642-0128	#10 x 3/4 in.
—	642-0121	#12 x 7/16 in.
—	642-0122	#14 x 1/2 in.
645-0129	—	#14 x 5/8 in.
—	642-0130	#14 x 3/4 in.
—	642-0125	#14 x 1-1/2 in.
—	658-0131	#14 x 1-3/4 in.
645-0132	—	#14 x 2 in.
645-0134	642-0134	#14 x 2-1/2 in.

(Blunt tip)



Qty: 100
T-27 pan head, six lobe with center pin.



Qty: 100
T-27 pan head, six lobe with center pin, self cutting thread, 3/8 in. length.
642-0118 (Stainless steel)

Chrome Plated Steel	Stainless Steel	Size	Shoulder
—	642-0107	#10-24 x 3/8 in.	None
—	642-0108	#10-24 x 3/8 in.	1/8 in.
—	642-0110	#10-24 x 1/2 in.	3/16 in.
645-0113	642-0113	#10-24 x 3/4 in.	3/16 in.
645-0116	642-0116	#10-24 x 15/16 in.	3/16 in.
—	642-0141	#10-24 x 1-1/16 in.	1/4 in.
645-0142	642-0142	#10-24 x 1-3/16 in.	1/4 in.
645-0143	—	#10-24 x 1-5/16 in.	1/4 in.



Qty: 100
T-27 shoulder, six lobe with center pin.



Qty: 100
T-27 barrel nut, six lobe with center pin, stainless steel.

Chrome Plated Steel	Stainless Steel	Size
645-0101	642-0101	#10-24 x 1/2 in.
645-0104	642-0104	#10-24 x 5/8 in.

Fasteners



One-way sheet metal screw.

- 642-0618** (#10 x 1/2 in., Stainless steel, Qty. 100)
- 658-0358** (#10 x 5/8 in., Stainless steel, Qty. 50)
- 651-0358** (#10 x 5/8 in., Chrome plated steel, Qty. 100)



Qty: 100
Unslotted barrel nut.

Chrome Plated Steel	Stainless Steel	Size
651-0469	642-0469	#8-32 x 1/2 in.
651-0668	642-0668	#10-24 x 1/2 in.



Qty: 100
One-way barrel nut.

Chrome Plated Steel	Stainless Steel	Size
651-0648	642-0648	#10-24 x 1/2 in.
651-0454	642-0454	#10-24 x 5/8 in.



Qty: 100
One-way oval head machine screw.

Chrome Plated Steel	Stainless Steel	Size
651-0472	642-0472	#8-32 x 1-1/8 in.



Qty: 100
One-way shoulder screw.

Chrome Plated Steel	Stainless Steel	Size	Shoulder
—	642-0651	#10-24 x 1/2 in.	1/8 in.
651-0508	642-0508	#10-24 x 3/4 in.	1/4 in.
651-0463	642-0463	#10-24 x 15/16 in.	1/4 in.
651-0654	642-0654	#10-24 x 1-1/16 in.	1/4 in.



Qty: 100
One-way shoulder screw.

Chrome Plated Steel	Stainless Steel	Size
651-0656	642-0656	#10-24 x 1-3/16 in.
651-0457	—	#10-24 x 1-5/16 in.



Qty: 100 sets.
#8-32 x 1-1/8 in. one-way oval head machine screw,
#8-32 x 1/2 in. unslotted barrel nut.
651-0451 (Chrome plated steel)



Qty: 12 sets.
Piano hinge screw pack containing:
#10-24 x 3/4 in. T-27 shoulder, six lobe with center pin,
#10-24 x 5/8 in. T-27 barrel nut, six lobe with center pin.
642-1005 (Chrome plated steel)



Qty: 100
Plastic, #14-16 x 1-3/8 in.
651-0475 (Blue)

Tools



Qty: 1 set.
2-hole security screw remover & driver, multiple bits for use with screw sizes #4, #6, #8 and #10.

650-7905



Qty: 1
Magnetic end, for use with all hex bits.

658-4005



Qty: 100
T-20 TORX®, six lobe.

658-4012



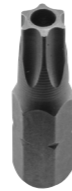
Qty: 100
T-25 TORX®, six lobe.

650-4013



Qty: 100
T-27 TORX®, six lobe.

650-4014



Qty: 100
T-30 TORX®, six lobe.

658-4015